

# Getting Started

## First Use of Radio

- IMPORTANT**  
Long condition the battery. Refer to the Battery Charger User Guide.
- Install the Antenna
- Install the Battery
- Turn on radio, adjust speaker volume, make a call.
- Press PTT to Talk. Release to Listen.

## Radio Configuration

Your Tait Orca radio has been configured for your requirements by your authorised Tait Dealer or your company administrator. Therefore, some functions will vary in operation or will not be available. The configuration information can be written onto this User Guide. For more information on trunking call functions, contact your Network Operator.

## Batteries

Use Tait Orca 5000 NiCd/NiMH batteries or Tait Orca Elan/Excel/Eclipse NiCd/NiMH batteries. For more information on batteries, refer to the Battery Care Guide.

**IMPORTANT**  
Do not put Tait Orca 5000 batteries into older battery chargers. Tait Orca 5000 NiCd/NiMH batteries are ONLY for Tait Orca battery chargers with software version 2.07+.

## Parts

If any parts are damaged or missing, report this to your authorised Tait dealer immediately.

# Making Calls

**GO**  
**Standard Operation**  
Illustration shows the recommended method for standard operation. Use the upper microphone to speak.

**PTT**  
Press PTT to talk. Release PTT to listen.

## Handset mode

Illustration shows the recommended method for use in handset mode. Use the lower microphone to speak.

## Function Keys

Use a short press or a long press to operate the function keys 1, 2, and 3. See Radio Configuration.

## Keypad

Dial the number. (5040 radios only)

Example: 159 307823



To make the call, short press: #

Optional: \* (Short press), # (Long press)

## 16-way Selector

The selector uses the presets numbered 1 to 16

Example: 159 PETER



To make the call, short press: #

Optional: \* (Short press), # (Long press)

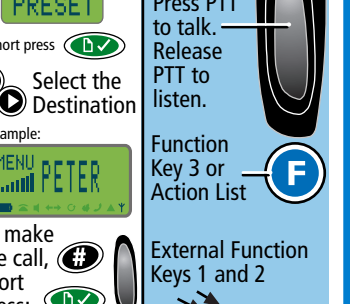
## Menu

Use the Menu to make a call.

## Function Key 1

Press PTT to talk. Release PTT to listen.

Example: MENU PETER



To make the call, short press: #

Optional: \* (Short press), # (Long press)

## Function Key 2

Select the Destination

## Function Key 3 or Action List

External Function Keys 1 and 2

# Call Information

<b>GO</b>	Go. Call accepted. Press PTT to Talk. Release PTT to listen.
<b>QUEUED</b>	Queued. Recipient has queued your call.
<b>MISSED CALLS</b>	Missed Calls. Call is Queued.
<b>SYS BUSY</b>	System is busy.
<b>ENGAGED</b>	Engaged. Recipient is busy.
<b>NOT HOME</b>	Recipient has turned radio off. Recipient is in Quiet mode (do not disturb) Recipient is out of range.
<b>WAIT</b>	Wait. System is busy but will connect you as soon as possible.
<b>UNAVAIL</b>	Unavailable. Call is not permitted.
<b>UNOBTAIN</b>	Unobtainable. Number is not supported.
<b>ACCEPTED</b>	Accepted. Call has been accepted.
<b>QUIET</b>	Quiet. Do not disturb.
<b>CALLBACK</b>	Callback. Return call by pressing PTT or Menu.
<b>CAR9</b>	Preset call numbers with label.
<b>208</b>	Preset call number without label OR same fleet but not set as a preset call on your radio.
<b>0 FLEET</b>	Call is from different fleet.

<b>CL1/3</b>	CL = Call SCL = Status MCL = Message
<b>LOCKON</b>	Lockon. Keylock is on. Long press to unlock
<b>ENTER CODE</b>	Enter Security PIN using keypad (personal identification number).
<b>PHONE</b>	Call from PSTN
<b>PABX</b>	Call from PABX

# Radio Configuration

Write your settings

Presets	
0	50
1	51
2	52
3	53
4	54
5	55
6	56
7	57
8	58
9	59
10	60
11	61
12	62
13	63
14	64
15	65
16	66
17	67
18	68
19	69
20	70
21	71
22	72
23	73
24	74
25	75
26	76
27	77
28	78
29	79
30	80
31	81
32	82
33	83
34	84
35	85
36	86
37	87
38	88
39	89
40	90
41	91
42	92
43	93
44	94
45	95
46	96
47	97
48	98
49	99

# Action List

Status Labels	
1	16
2	17
3	18
4	19
5	20
6	21
7	22
8	23
9	24
10	25
11	26
12	27
13	28
14	29
15	30

# Radio Identification

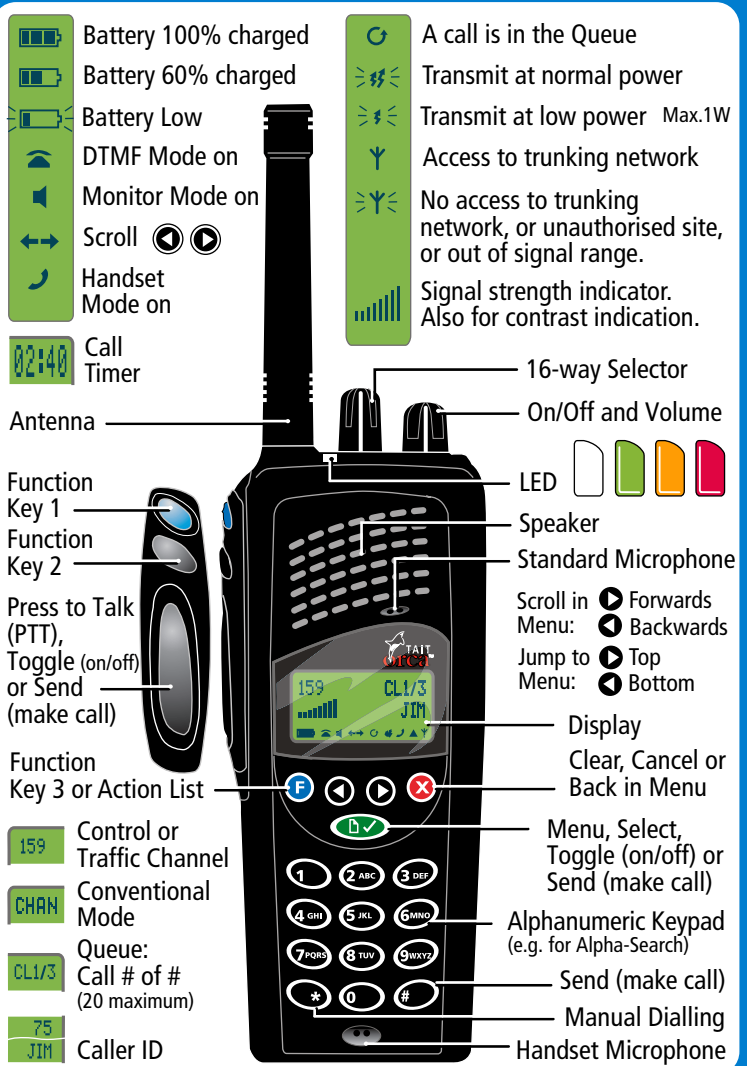
Prefix #	Fleet #	Radio ID #

# Group Information

--

# Emergency Call Numbers

--



- Battery 100% charged
- Battery 60% charged
- Battery Low
- DTMF Mode on
- Monitor Mode on
- Scroll
- Handset Mode on
- Call Timer
- 16-way Selector
- On/Off and Volume
- LED
- Speaker
- Standard Microphone
- Scroll in Menu: Forwards
- Menu: Backwards
- Jump to Menu: Top
- Menu: Bottom
- Display
- Clear, Cancel or Back in Menu
- Menu, Select, Toggle (on/off) or Send (make call)
- Alphanumeric Keypad (e.g. for Alpha-Search)
- Send (make call)
- Manual Dialling
- Handset Microphone
- Function Key 1
- Function Key 2
- Press to Talk (PTT), Toggle (on/off) or Send (make call)
- Function Key 3 or Action List
- Control or Traffic Channel
- Conventional Mode
- Queue: Call # of # (20 maximum)
- 75
- Caller ID

# Menu

<b>MENU</b>	Short press: Clear, Cancel or Back in Menu. Long press: Delete queued calls.
<b>QUEUED CALLS</b>	Select call: CL 1/07. Return call (and delete from Queue). Read status or message. Delete call.
<b>SELECT PRESET</b>	Select from list: who to call, status call, radio setting, radio mode. Alphanumeric Search. RADIO 5 GROUP 1... Alphabetic display.
<b>DATA ENTRY</b>	SELECT STATUS → Select status from list of status labels: LUNCH BACKIN15 AT SITE1...
<b>USER SETTINGS</b>	HANDSET → Handset mode: on/off. LOW PWR → Transmit at low power: on/off. KEYLOCK → Keypad lock: on/off. SQUELCH → Squelch: city/country. DTMF → Dual Tone Multifrequency (DTMF) mode: on/off. QUEUE → Queue incoming calls: on/off. Maximum 20 calls. QUIET → Quiet. Do not disturb: on/off. DYN PWR → Dynamic power control: on/off (MPT1327). PTTLOCK → PTT Lock. PTT is locked.
<b>ALERT SETTINGS</b>	TONES → Radio Tones: on/off. LEVEL → Volume of Radio Tones: high/low. KEYTONE → Keypress Tones: on/off.
<b>DISPLAY SETTINGS</b>	NIGHT → Night use mode: on/off. ADJUST CONTRAST → Adjust contrast of display.
<b>ADV SETTINGS</b>	SELECT → Select Site (control channel) from list: 123 156... SITE RESUMING Resuming normal signal hunting. SELECT NETWORK → Select Network from list: NETWORK1... Short press for Radio Identification.
<b>VERSION INFO</b>	Select version from list: HW VER Software MAIN DB Database CAL DB Calibration

# Modes

**Dynamic Power Control MPT1327**  
Automatically reduces the transmit power in high signal strength areas.

**Backlighting**  
When you press a key, the backlighting is turned on. Turns off after 1 to 10 seconds of no activity.

**Night Use mode**  
If on, the keypad backlighting is turned on when there is activity on the channel or if a scan group is selected. Turns off after 1 to 10 seconds of no activity.

# Groups

**Group Calls**  
Broadcast Call – Group members can listen but not respond.  
Conference Call – Group members can listen and respond.  
A user can be assigned to some groups, all groups or no groups.  
Trunked – Permanent groups are set by the trunking system. Persons are assigned when the radio is configured.

**Group Types**

- User Selectable Group
- Scan Group
- User Selectable plus Scan Group
- Permanent Group
- Dynamic Group
- Manual Group Select

**Group Call Limitations**  
Sender has no indication of how many group members have received the call. No connection acknowledgment. Need the recipient to acknowledge by voice. Radios that are off, out of range, or engaged will not receive.

**Temporary Groups**  
A user can become a member of a group temporarily by selecting the group or when the dispatcher assigns the user to a group.

**Group Call Limitations**  
Users can select the groups that they want to be assigned to using the 16-way selector.

**Manual Group Select**  
Users can select the groups that they want to be assigned to using the 16-way selector.

**Group Select**  
The dispatcher controls which groups the user is assigned to. This feature can be dependent or independent of the position of the 16-way selector, so that group control from the dispatcher can be ignored or accepted.

# Radio Configuration

Write your settings

	F1	F2	F3	External
Disabled				
Tones – Beep on / off				
Dynamic Power Control on / off				
Preset Call #1				
Preset Call #2				
Select Site (control channel) – 5040 only				
Clear				
Do Not Disturb (DND) on / off				
Adjust Contrast of Display				
Backlighting on / off				
Night Use Mode on / off				
Handset Mode on / off				
Transmit at Low Power on / off				
Monitor on / off				
Keypad Lock on / off				
DTMF mode on / off – 5040 radio only				
Handset Mode				
Volume				
Inactivity seconds =				

# 16-way Selector

The selector uses the presets numbered 1 to 16.

1	9
2	10
3	11
4	12
5	13
6	14
7	15
8	16



# Trunking Call Functions

5040 radio only  
**Common Trunking Functions** R = Radio number G = Group number

Dialling String	Function	PABX extension or PSTN number
*0 #	Request base despatcher to call you back Cancel	Calls can be sent or received from Private Automatic Branch Exchanges (PABX) and Public Switched Telephone Networks (PSTN). Dial the code and number then # or Menu. See your fleet manager for the code. You don't need to dial the area code if in the same area code region.
*0*RRR # #0*RRR #	Request another despatcher to call you back Cancel	
*055*RRR # *0PP*RRR #	Status call. SS = status 01 to 30 Status label to despatcher. PP = preset 00-99	
*1*GGG # *11*GGG #	Conference call to group GGG Broadcast call to group GGG	
*31*NNN #	Non-prescribed data calls	
*41*RRR # #41 #	Divert own calls to radio RRR Cancel	
*41*0NNN... # #41 #	Divert own calls to PSTN NNNN... Cancel	
*44*RRR*RRR # #44*RRR #	Divert third party calls from RRR to RRR Cancel	
*48 # *480	Queue incoming calls. Cancel = #48 # Empty the Queue	
*49 # #49 #	Quiet. Do not disturb Cancel	
*700 # *701 #	Display the name of the current network Change to network 1 to 4 (701 702 703 704)	
*8*RRR # *8*1*GGG #	Priority call to radio number RRR Priority conference call to group number GGG	
*9*RRR # *9*1*GGG #	Emergency call to radio RRR Emergency conference call to group GGG	
**49 #	Abbreviated dialling codes 1 to 49	
#45 #	Cancel call divert from other user	

**MPT1343 Common Call Setup**

Dialling String	Call To	Example
0	PSTN number	0 03 3456789 #
20 to 89	Radio in same fleet as you (RR)	89 #
200 to 899	Radio in same fleet as you (RRR)	899 #
2001 to 6050	Radio in another fleet with same prefix as you	6050 RRR #
200 to 327	Radio in another fleet with different prefix to you	327 6050 RRR #
90 to 99	Group in same fleet as you (GG)	90 #
900 to 999	Group in same fleet as you (GGG)	900 #

**ANN Fleet Calls**

Fleet Size	Call To	Example
Large	Radio 234 in Fleet 1 with same prefix as you Radio 235 in Fleet 2 with different prefix i.e. 32	7 1 234 # 7 32 2 235 #
Medium	Radio 23 in Fleet 51 with same prefix as you Radio 23 in Fleet 52 with different prefix i.e. 126	7 51 23 # 7 126 52 23 #
Small	Radio 23 in Fleet 80 with same prefix as you Radio 23 in Fleet 81 with different prefix to you i.e. 3	7 (80r9) 80 23 # 9 3 81 23 #

**LMS Dialling**

Call Type	Call To	Example
Own fleet	Radio 213 in Fleet 34 in same fleet as you	213 #
Interfleet	Radio 215 in Fleet 36 (another fleet)	36 215 #
Interprefix	Radio 217 in Fleet 38 (another fleet) of Prefix 202	202 38 217 #

**Preset Numbers**

Dialling String	To	Example
0 then 0 to 99 #	Preset strings (leading zero)	069 #

**Conventional Channels**

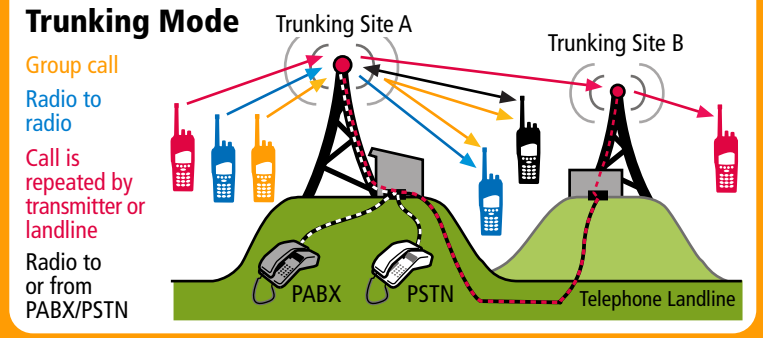
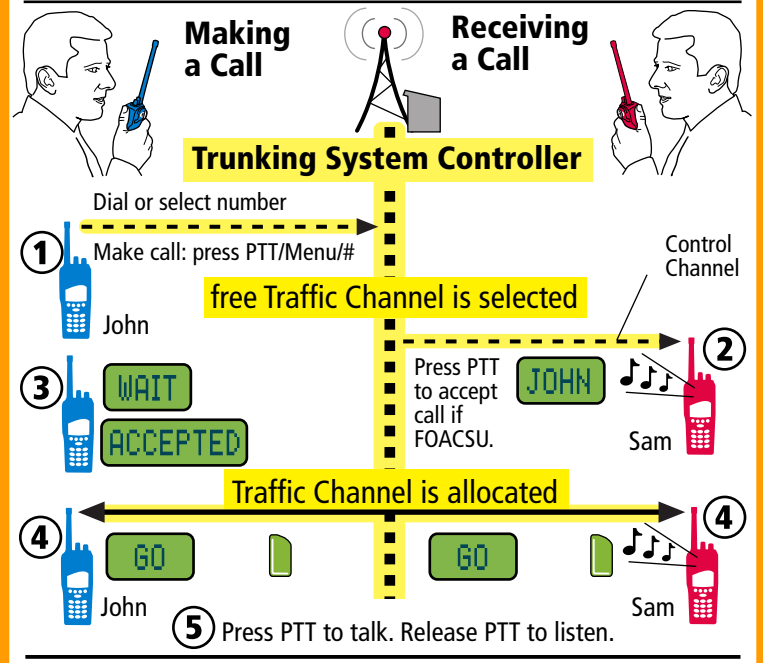
Dialling String	To	Example
101 to 110 #	Conventional channels	106 #

## Performance

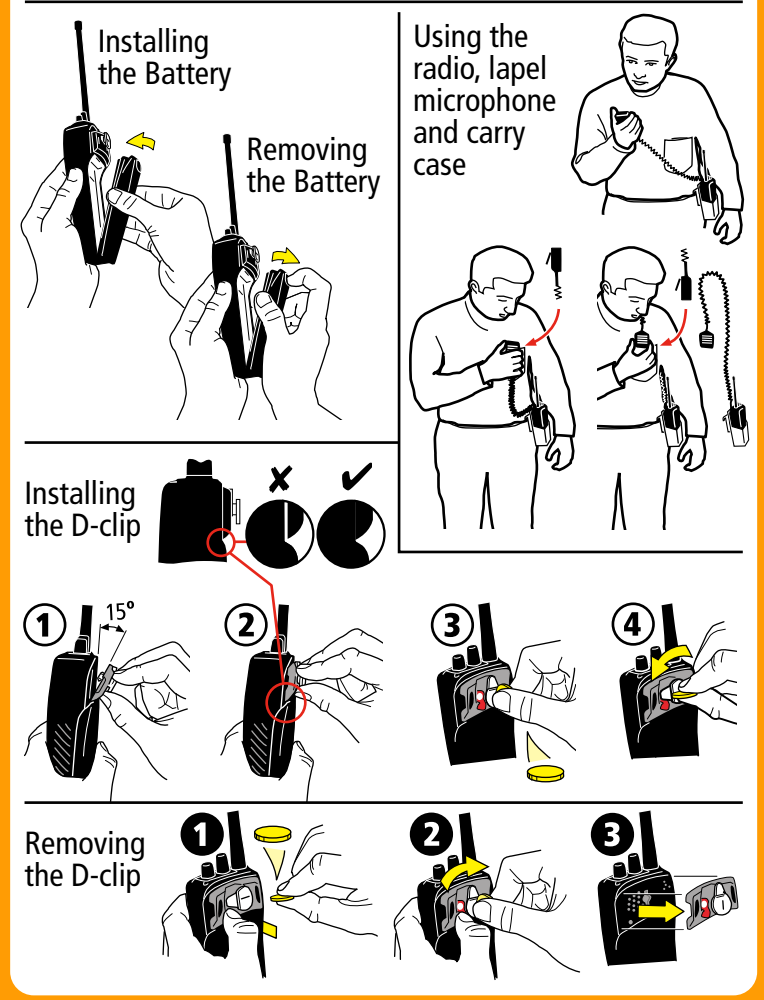
- To maintain the optimum performance of the radio:**
- Use only the supplied antenna.
  - Use only the radio and accessories for their design purpose.
  - Use only accessories that are approved by Tait Electronics Ltd.
  - Avoid high temperatures. If the temperature exceeds 80°C (176°F) the radio will make two short high-pitched beeps and will not work. Temperatures above 90°C (194°F) cause permanent damage to the radio.
- To maintain the optimum performance of the battery:**
- Charge the battery as soon as the radio gives the 'low battery' warning.
  - Short condition the battery weekly.
  - Long condition the battery only for the following reasons: on first use, if performance is poor, and after more than two weeks of storage.
  - Do not charge a battery that has had little or no use.
  - Do not leave charged batteries in the charger for more than a day.
  - Turn the radio off when it is unattended for long periods.

**Recycle**  
 Recycle batteries that are of no use. Contact your authorised Tait dealer for advice.

## Trunking System



## Accessory Use



## Accessories

Contact your authorised Tait Dealer

Antennas  
 Belt Loop  
 6-Way Multi-Charger  
 Battery Charger  
 Battery  
 D-Clip  
 Accessory Connector Kits  
 Leather Carry Cases  
 Accessory Adaptors  
 Headphones  
 Earphones, Palm and Lapel Microphones  
 Speaker Microphones  
 Servicing and Programming Kits  
 Car Kit

## Looking after your Radio

- Your radio does not require routine maintenance. However, it is a sophisticated electronic device and should be treated with care.
- Clean the radio, accessories and charger weekly using a clean dry lint-free cloth. When cleaning, do not use solvents, detergents, alcohol, aerosol sprays or petroleum-based products.
- Clean the electrical contacts on the battery and charger weekly using a fibre glass pencil, or the graphite tip of a type 4h (#4) or harder pencil.
- Do not put the radio and accessories in fluids.
- Do not drop the radio onto hard surfaces, place it down carefully.
- Do not use if the radio, antenna or accessories are damaged.
- Repairs and modifications must only be carried out by a Tait approved dealer.
- Always have the D-Clip or protective cover installed to protect the radio from dust ingress and electrostatic discharges.

## Troubleshooting

**Blank Display**  
 If the display is blank after turning on the radio and the radio turns itself off automatically after a few minutes, it is likely there is no power.

**Medium flash**  
 Radio is incorrectly configured. Contact your authorised Tait dealer or your company administrator.

**ERROR XX**  
 Contact your authorised Tait dealer or your company administrator.

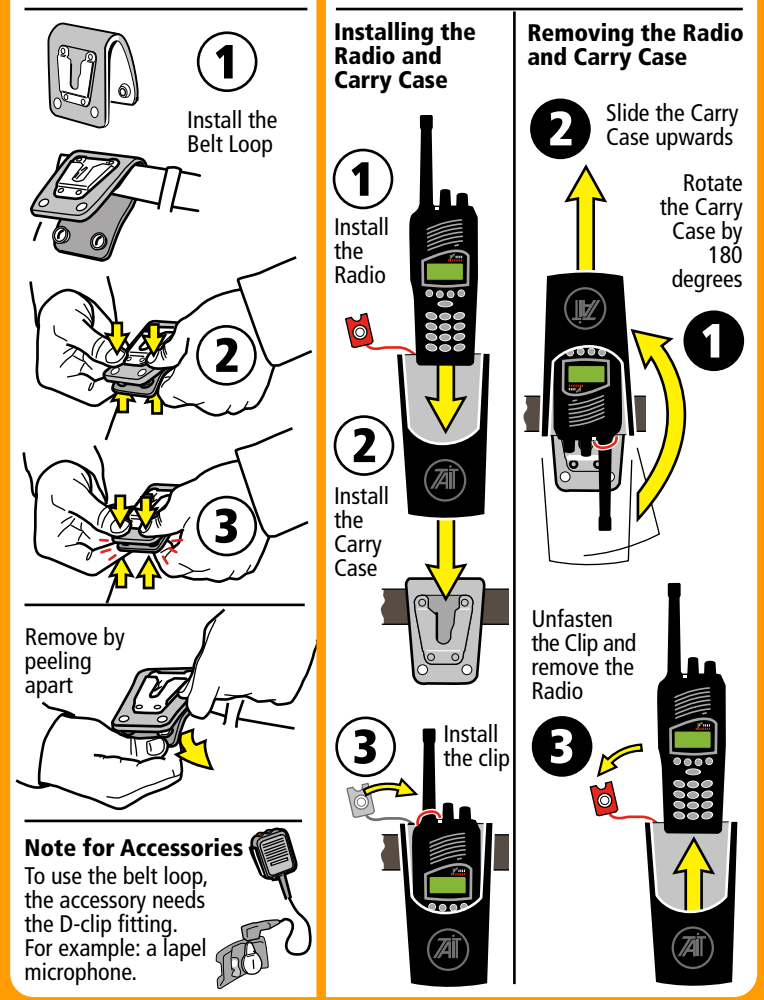
**Battery is low**  
 Charge the battery.

**Battery is too low to operate the radio**  
 Turn off the radio. Charge the battery.

**Checklist**

- Is the radio turned on?
- Is the correct channel selected?
- Is the battery installed on the radio?
- Is the battery charged?
- Is the antenna damaged?
- Is the battery charger working properly?

## Belt Loop Carry Case



## Safety Precautions

- When transmitting, hold the radio microphone 25-50mm (1-2 inches) from your mouth.
  - When transmitting, keep the antenna at least 25mm (1 inch) from any part of your body, especially your face and eyes.
  - Turn off the radio where radio waves could interfere with electronic devices.
  - Turn off the radio at fuel/gas stations.
  - Turn off the radio in an area where detonators/explosives are being used.
  - Turn off the radio before boarding/leaving an aircraft and whilst on board an aircraft.
  - Do not use the radio whilst driving vehicles or operating machinery.
  - Do not use earphones or headsets at high volume levels.
  - Do not transmit in frequency bands that are reserved for use by distress beacons, such as 406 to 406.1 MHz.
  - Do not put the radio, battery or accessories in liquids as they will be damaged.
  - Do not allow children to play with the radio; it is not a toy.
- Hazardous Atmospheres**  
 A hazardous atmosphere has the potential for fire or explosion from dusts, gases, liquids and solids. Make sure of the following in hazardous atmospheres:
- Turn off the radio, unless the radio is qualified for use in hazardous atmospheres.
  - Do not replace batteries, even if the radio is qualified for use in hazardous atmospheres.
  - Do not use damaged radios. If the radio was originally qualified for use in such environments, the radio is not qualified if it has a cracked casing.
  - Do not modify the configuration of a radio that is qualified as intrinsically safe for use in hazardous atmospheres. If you do, it will not be qualified.
- Electromagnetic Interference**  
 Turn off your radio where radio waves could interfere with electronic devices. Some facilities use equipment that is sensitive to Electromagnetic Interference such as: hospitals, medical centres, aircraft and some industrial facilities. Only use your radio in these situations if the radio is qualified for use in such areas.
- Note: The following warning applies to FCC approved radios in the 800 MHz and 900 MHz frequency bands:
- FCC RF Exposure Limits**  
 This product generates radio frequency energy during transmissions. It is classified by the FCC as suitable for general population use in an uncontrolled exposure environment. The following conditions apply to the use of this radio:
- It must only be used with authorised accessories and antennas.
  - Do not exceed a duty cycle ratio of 20% transmit mode to stand-by or receive modes. The radio is in transmit mode when the PTT key on the radio is pressed and the TX indicator LED is lit.